

# CAPABILITY STATEMENT

ABSEIL ACCESS

## THE PURPOSE

This document is composed to assist our clients and the supply chain to understand our group operating structure along with a high-level understanding of the benefits, services, and key people associated with Abseil Access capabilities.



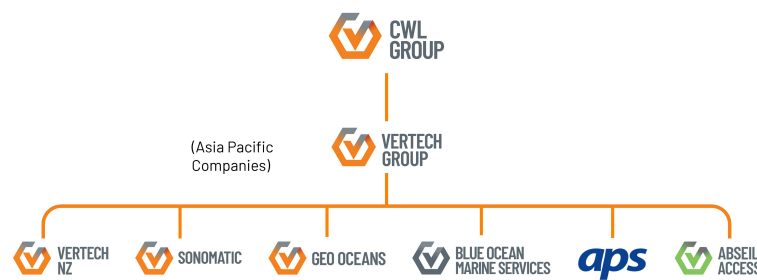


# COMBINED SERVICES

Bringing together the services and specialisations provided by Vertech and Abseil Access give us the ability to offer a holistic approach to all of our industry sectors and provide numerous solution angles from across our business units.



## OWNERSHIP STRUCTURE



## OFFICE LOCATIONS

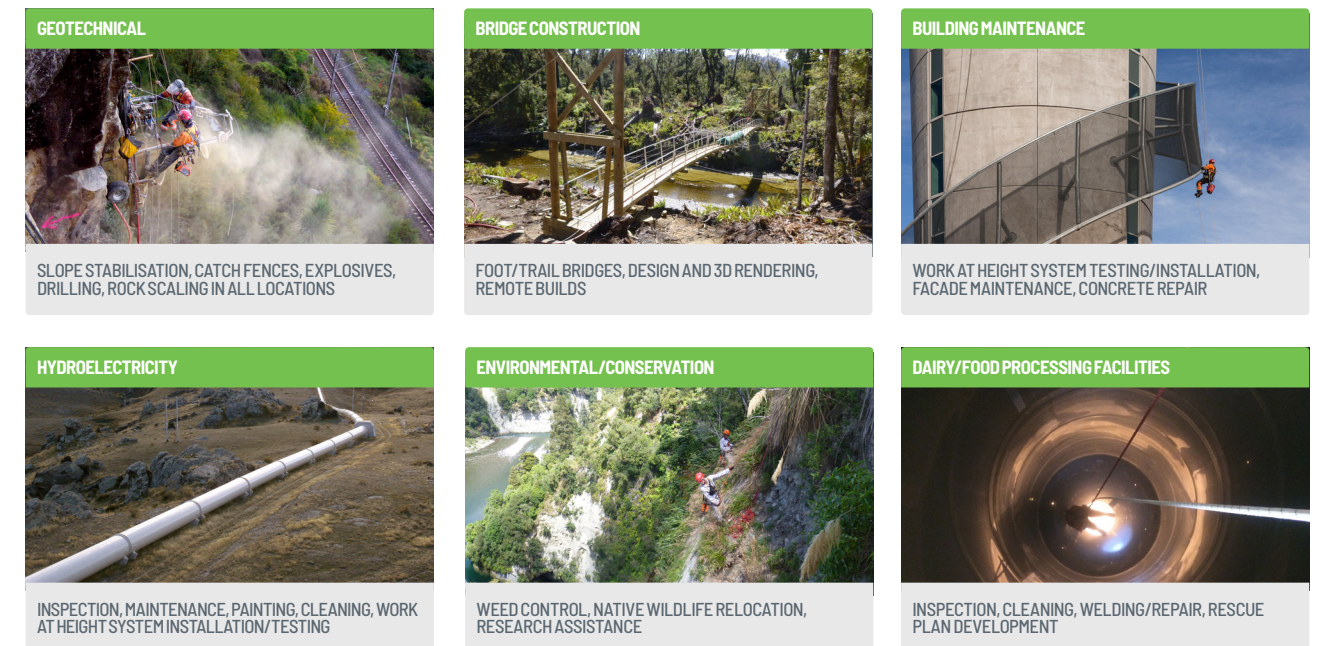


# SERVICE OVERVIEW

Since 1993, Abseil Access has provided a wide range of services to numerous sectors including: civil, environmental, infrastructure, construction and energy. Building on a foundation of alternative access solutions, Abseil Access has built a strong portfolio of skillsets and successfully delivered projects all over New Zealand and the South Pacific.

We are driven to innovate, develop and collaborate with subject matter experts and clients to be industry leading and provide the safest, most efficient service offerings.

## INDUSTRY SECTORS





# CONTACTS

## WELLINGTON OFFICE

**Martin Wilson**

Managing Director

T: +64 (4) 801 5336

E: [Martin.Wilson@abseilaccess.co.nz](mailto:Martin.Wilson@abseilaccess.co.nz)

**Stefan Geissdoerfer**

Project Manager - Bridge Construction

T: +64 (4) 801 5336

E: [Stefan.Geissdoerfer@abseilaccess.co.nz](mailto:Stefan.Geissdoerfer@abseilaccess.co.nz)

**Charles Loader**

Project Manager - Geotechnical/Inspection

T: +64 (4) 801 5336

E: [Charles.Loader@abseilaccess.co.nz](mailto:Charles.Loader@abseilaccess.co.nz)

**Murray Thessman**

Project Manager - Asset Management

T: +64 (4) 801 5336

E: [Murray.Thessman@abseilaccess.co.nz](mailto:Murray.Thessman@abseilaccess.co.nz)

**Kannan Sankaran**

Finance Manager

T: +64 (4) 801 5336

E: [Kannan.Sankaran@abseilaccess.co.nz](mailto:Kannan.Sankaran@abseilaccess.co.nz)

**Diane Far**

Finance Administrator

T: +64 (4) 801 5336

E: [Diane.Far@abseilaccess.co.nz](mailto:Diane.Far@abseilaccess.co.nz)

## CHRISTCHURCH OFFICE

**Andrew Lillig**

Technical Director

T: +64 (4) 801 5336

E: [Andrew.Lillig@abseilaccess.co.nz](mailto:Andrew.Lillig@abseilaccess.co.nz)

**Erle Vaughan**

Project Manager

T: +64 (4) 801 5336

E: [Erle.Vaughan@abseilaccess.co.nz](mailto:Erle.Vaughan@abseilaccess.co.nz)

**Lewis Grant**

Project Coordinator

T: +64 (4) 801 5336

E: [Lewis.Grant@abseilaccess.co.nz](mailto:Lewis.Grant@abseilaccess.co.nz)

## NELSON OFFICE

**Alex Wilmshurst**

Project Manager/HSEQ Advisor

T: +64 (4) 801 5336

E: [Alex.Wilmshurst@abseilaccess.co.nz](mailto:Alex.Wilmshurst@abseilaccess.co.nz)



[www.abseilaccess.co.nz](http://www.abseilaccess.co.nz)



[www.vertech.com.au](http://www.vertech.com.au)



[www.vertechnz.co.nz](http://www.vertechnz.co.nz)



[www.sonomatic.com.au](http://www.sonomatic.com.au)